

Features

- Direct replacement for G24-Q3 / G24-D3 Plug-in CFL lamps with standard dimensions
- Compatible with 13/18/26W existing ballasts and can also work without the ballast
- 120~277VAC universal voltage applicable
- Designed for horizontal mounting
- Long lifespan of 35,000hrs
- Available in a wide range of CCT (Kelvin colors)

Benefits & Applications

- Environmentally friendly - No mercury or lead
- 80% energy saving compared to CFL lamps
- Idea for hotels, office spaces, cafes, saloons, meeting rooms, shopping malls, homes, school lighting etc...
- Maintenance free operation, lasts up to 20 times longer than conventional lamps



Ordering Guide

EXAMPLE: ECO PL 9 27K Q H _ _

Lamp Type	Power Consumption	Lamp Base	CCT	Series	Lamp Base	CRI
Plug-in Light	09 9Watts	G24 G24 Edison screw base	27K 2700K	B Series B	Q G24Q3 screw base	H CRI80
	12 12Watts	GX23 GX23 Edison screw base	30K 3000K		D G24D3 screw base	U CRI90
			40K 4000K		X GX23 screw base	
			50K 5000K			

Energy Efficiency

Estimated Lighting Costs Using a Standard 26W CFL lamp		
Present Wattage	26 W	
× Annual Operating Hours	3,650 hrs	
=	94,900 Watts per year	

÷ 1,000	= 94.9 kWh per year	
× kWh rate of \$0.11	= \$10.439 per year	
× 100 lamps per space	= \$1,043.9 annual energy cost per space	

Estimated Lighting Costs Using a Eco-Story 12W LED PL LAMP		
Present Wattage	12 W	
× Annual Operating Hours	3,650 hrs	
=	43,800 Watts per year	

÷ 1,000	= 43.8 kWh per year	
× kWh rate of \$0.11	= \$4.818 per year	
× 100 lamps per space	= \$481.8 annual energy cost per space	

Total Estimated Annual Energy Costs Savings	=	\$562.1
--	----------	----------------

* Based on 100 lamps per space operating at 3,650 hours per year.

This energy saving example shows an application of 100 lamps in a space currently using a 12W LED PL lamp, operating 3,650 hours per lifespan at a cost of \$0.11 per kWh.**As you can see replacing 100 pcs 26W CFL lamp with the Eco-Story LED PL lamp, Eco-Story provides significant energy cost savings of \$562.1 per year! Your actual savings may vary depending on the energy costs in your geographic location.

*Light output of the 12W LED PL lamp at 1050 lumens compares to the 26 W CFL lamp at 1700 lumens.

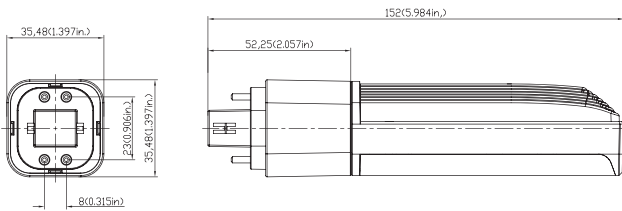
WARNINGS AND CAUTIONS

- Turn power off before inspection, installation, or removal.
- Suitable for Dry and Damp locations. Operating temperatures range between -20°C and +40°C (-4°F and +104°F)
- Do not use in enclosed fixtures.
- Do not open – no user serviceable parts inside. North America use on 120-277VAC 50 /60 Hz circuits.
- This device is not intended for use with emergency exit fixtures or emergency exit lights.

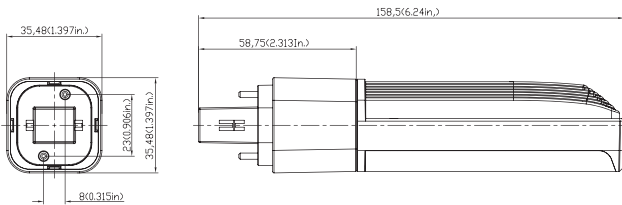
Dimensions

unit: mm

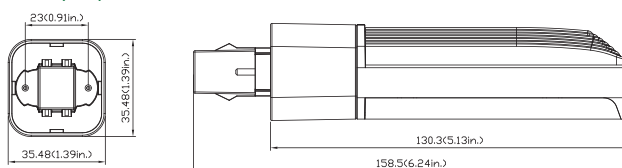
G24Q (9W)



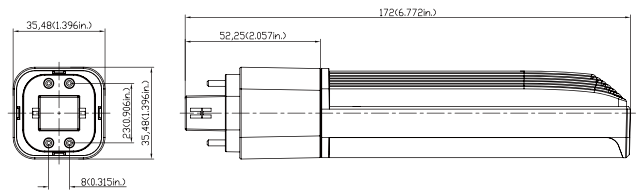
G24D (9W)



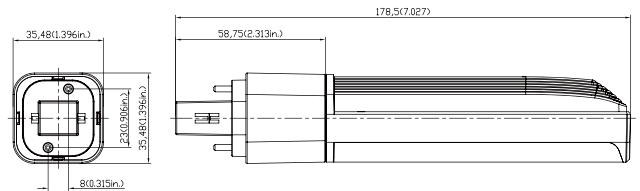
CX23 (9W)



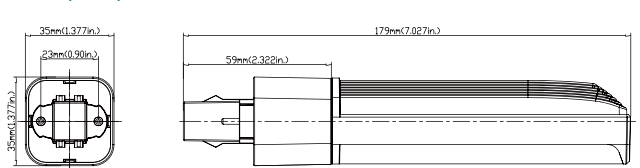
G24Q (12W)



G24D (12W)



CX23 (12W)



Ballast Compatibility Listing

ECOPL9XXKBZZ

Voltage	Ballast Lamp Number	PHILIPS	PHILIPS	PHILIPS	PHILIPS	Triad	Triad	Triad	OSRAM	FULHAM	HATCH	HATCH
		ICF-2S26-M1-BS	ICF-2S42-M2-LD	ICF-2S26-H1-LD	ICF-2S18-H1-LD	C2642UNVBES	C2642UNVME	C213UNVME	2X26CF/UNV	RHA-UNV-226-C	HC218PS/UV/D	HC213PS/UV/D
120V	1							20%				10%
	2							20%				10%
230V	1							20%				10%
	2							20%				10%
277V	1							20%				10%
	2							20%				10%

Note: ■ EXCELLENT

■ WORKING BUT % LESS ON WATTAGE AND LUMENT OUTPUT

■ NO WORKING OR FLIKERING

ECOPL12XXKBZZ

Voltage	Ballast Lamp Number	PHILIPS	PHILIPS	PHILIPS	PHILIPS	Triad	Triad	Triad	OSRAM	FULHAM	HATCH	HATCH
		ICF-2S26-M1-BS	ICF-2S42-M2-LD	ICF-2S26-H1-LD	ICF-2S18-H1-LD	C2642UNVBES	C2642UNVME	C213UNVME	2X26CF/UNV	RHA-UNV-226-C	HC218PS/UV/D	HC213PS/UV/D
120V	1				5%			25%			10%	15%
	2				5%			25%			10%	15%
230V	1				5%			25%			10%	15%
	2				5%			25%			10%	15%
277V	1				5%			25%			10%	15%
	2				5%			25%			10%	15%

Note: ■ EXCELLENT

■ WORKING BUT % LESS ON WATTAGE AND LUMENT OUTPUT

■ NO WORKING OR FLIKERING